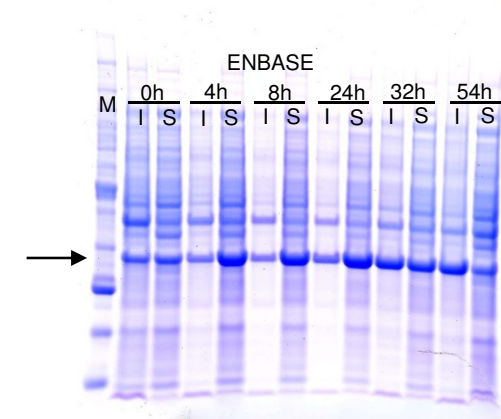
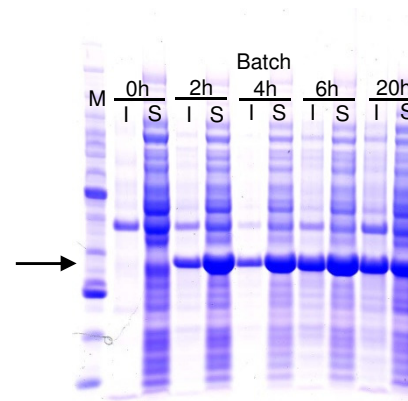
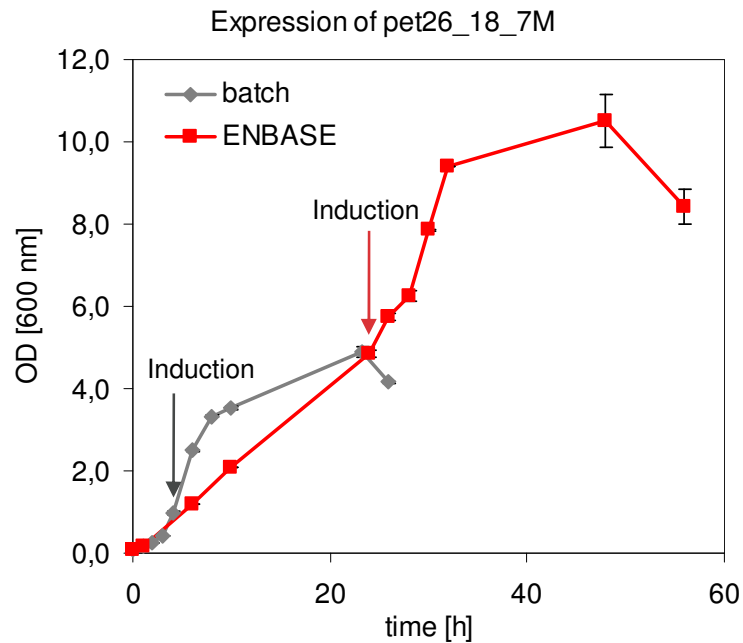
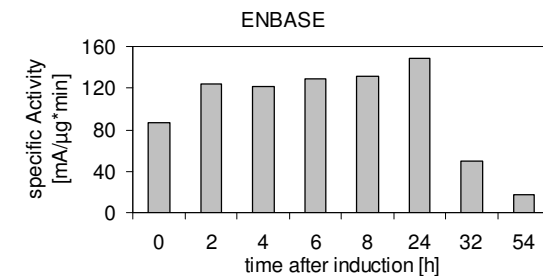
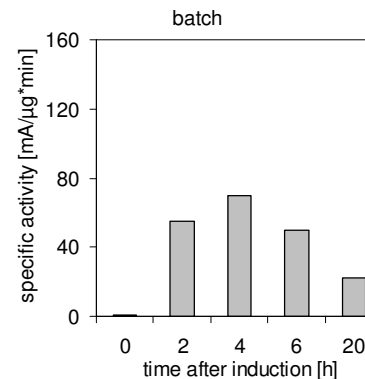


# Shaking flasks – Evaluation for BRAIN

## Recombinant protein activity



Spectrophotometric determination of initial, specific enzyme activity:



**ENBASE is superior to batch cultivation for production of recombinant enzymes**

- Double of biomass concentration
- Double of specific enzyme activity

### Experimental conditions

Innova 2100 platform shaker, 180 rpm; shaking flask or ENBASE shaking-flask; *E. coli* BL21 (DE3) (pET26\_18\_7M) inoculated from preculture in LB; Initial OD<sub>600nm</sub> = 0.1; MSM medium with or without 10 g/liter glucose; Amylase activity, 3 U/liter; temperature, 37 °C, Induction with 100 µM IPTG after 4 h or 24 h

EvoSolution®: for novel BioActives  
and novel Enzymes

